



Remote DVR Manager

User's Guide

v 1.1

OVERVIEW	5
1. PC system requirements	5
2. Installing Program	6
DVR Manager Monitor	8
3. Screen mode	8
3.1. Screens split.....	8
3.2. Full Screen.....	8
3.3. Screen mode alteration	8
3.4. Screen Repositioning.....	9
4. DVR list	9
4.1. Registering at My DVR	9
4.1.1. Registering remote DVR	9
4.1.2. Registering from Local Area DVR list.....	10
4.1.3. Registering from WRS list.....	10
4.2. Editing DVR information	10
4.3. DVR status	11
4.4. Viewing image	11
4.5. Quick Recording	12
4.6. PTZ.....	12
4.7. Changing frame rate	13
5. Group mode.....	14
5.1. Registering group	14
5.2. Editing group information	15
5.3. Deleting group	15
5.4. Viewing images	15
6. Auto sequence.....	16
7. Log.....	16

7.1. Stopping log scroll	16
7.2. Viewing log	17
7.3. Viewing log image	17
7.4. Viewing the recorded log image.....	17
7.5. Text log.....	18
8. Option configuration	18
8.1. Caption	18
8.2. REC	18
8.3. Direct X.....	19
9. AUDIO.....	19
10. Relay Out	19
DVR Manager Playback.....	20
11. Selecting and connecting DVR & Backup File.....	20
12. Search.....	21
12.1. Image Information	21
12.2. Selecting channel	21
12.3. Changing search period	22
12.4. Searching calendar	22
12.5. Searching log	22
12.6. Searching TEXT	23
12.7. Expanding/reducing screen	23
13. Play.....	24
13.1. Play control button	24
13.2. Playing Audio	24
14. Controlling Image	24
14.1. Controlling zoom/brightness/contrast.....	24
14.2. Saving image	25

14.3.	Printing image	25
15.	Backup function	26
DVR Manager ConfigStation.....		27
16.	Registering at My DVR.....	27
16.1.	Registering remote DVR	27
16.2.	Registering from local area DVR list	28
16.3.	Registering from WRS	28
17.	Login & configure	28
17.1.	Information tab	29
17.2.	System tab	29
17.3.	Network tab	30
17.4.	User tab	30
17.5.	Camera tab	31
17.6.	HDD tab.....	32
17.7.	Schedule Zone tab	32
17.8.	Schedule tab.....	33
17.9.	Security tab	33
17.10.	Device tab.....	34
17.11.	Relay tab	34
17.12.	Miscellaneous tab	35

OVERVIEW

DVR Manager is for managing ELX DVR series). Three separate programs: Monitor, Playback, and ConfigStation comprise the DVR Manager.

By installing the DVR Manager on a Windows 2000 Professional or XP PC, monitoring real-time and recorded images is possible via Intranet or Internet.

To manage multiple channels easily, DVR Manager supports camera list and group mode.

<Note Supportable DVR list & version >

- DS412 v1.0.21 or the higher version
- ELX-08E v1.0.25 or the higher version

1. PC system requirements

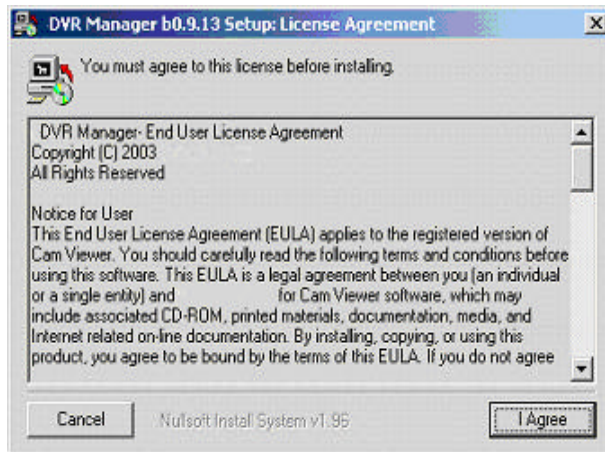
	Minimum	Recommended
CPU	Intel Pentium III 600Mhz	Intel Pentium III 1Ghz
Memory	128MB	256MB
VGA	16MB	32MB
Resolution	1024 768	1024 768
HDD storage space	5MB	1GB or higher
OS	Windows 2000 Professional	Windows 2000 Professional
Others		DirectX 8.1 or higher

Before installing program, check the PC specifications. DVR Manager may not perform correctly if PC does not meet minimum requirements.

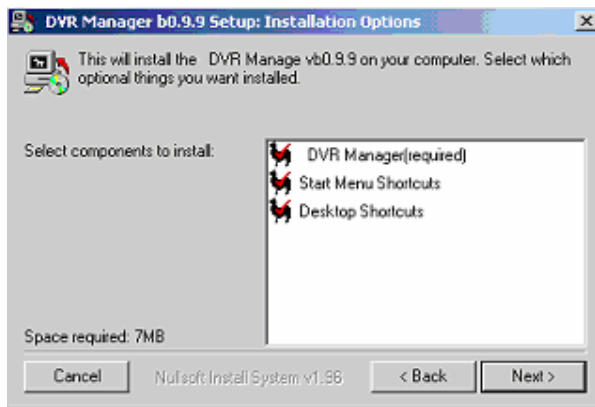
DVR Manager is designed to be the only program running at any given time. If several programs run simultaneously with DVR Manager, unpredictable errors may occur.

2. Installing Program

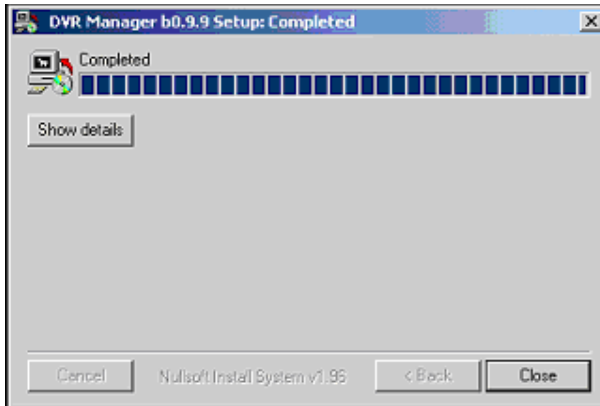
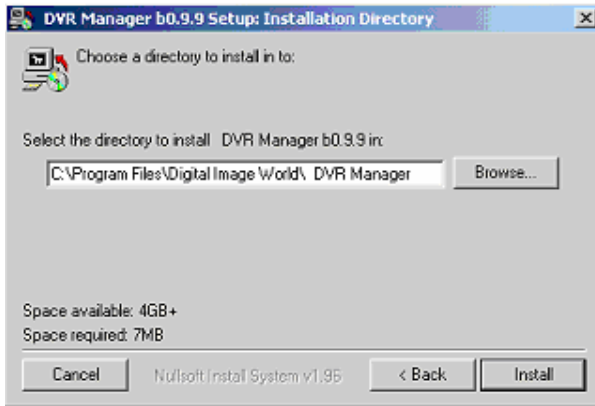
- 1) Click the “DVR Manager v1.x.x Setup.exe” file on DVR Manager Setup CD.
- 2) Press the “I Agree” button.



- 3) Press the “Next” button.

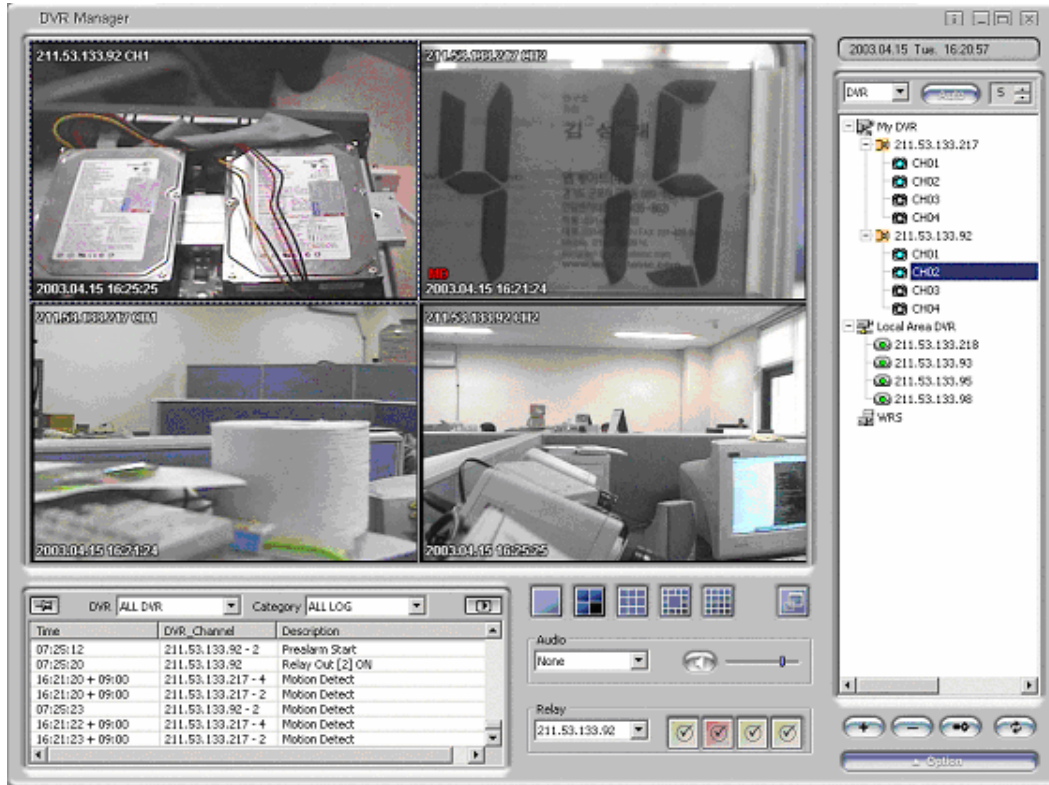


- 4) Press the “Install” button. Default directory is C:\Program Files\Digital Image World\DVR Manager. To choose a different directory, click browse and choose different location.



- 5) After installing, press the "Close" button.

DVR Manager Monitor




3. Screen mode

3.1. Screens split



Supports 1/4/9/13/16 split screens.

3.2. Full Screen

Press  or “Alt + Enter” button, for full screen mode. In order to go back to previous mode, press “Esc” or “Alt + Enter” button.

3.3. Screen mode alteration

Double-click one image within any split screen mode, one channel mode will result. In order to go back to previous mode, double-click again.

3.4. Screen Repositioning

Image screen can be altered by drag and drop method. Image screen can be enlarged, reduced, and repositioned to other parts of the computer screen.


4. DVR list

DVR list has three default folders: My DVR, Local Area DVR, and WRS. In order to access DVR and monitor images, register DVR at My DVR folder.



4.1. Registering at My DVR

4.1.1. Registering remote DVR

1) Click  icon or right click mouse and select “Add DVR.” The below screen entitled “Add new DVR” will appear.

2) Enter DVR Name, User ID, Password, IP Address, and Port, and press “OK” button.

<Note>

- Enter User ID, Password, IP Address and Port
- The default values of User ID/Password are admin/admin.
- DVR can be assigned a name that can be up to 30 characters.

4.1.2. Registering from Local Area DVR list

- 1) Drag & drop a DVR among local area DVR list into “My DVR”. A pop up screen entitled “Add New DVR” will open.
- 2) Enter DVR Name, User ID, Password and Port, and press the “OK” button.


<Note>

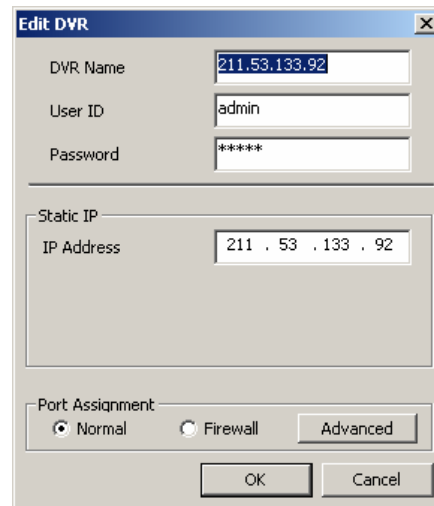
- Local Area DVR automatically lists, detects and refreshes DVR on the local network.
- The information on My DVR is applied to DVR Manager Monitor, Playback, and ConfigStation screen.

4.1.3. Registering from WRS list

- 1) Click “Add WRS” among pop-up menus of WRS folder by right clicking the mouse, and enter Registration Server(210.116.114.37).
- 2) Click “Add Group ID” among pop-up menu, and enter Group ID.
- 3) Drag & drop into “My DVR” folder. “Add New DVR” screen will open.
- 4) Enter DVR Name, User ID, Password and Port, and then press “OK” button.

4.2. Editing DVR information

Click  or select “Edit DVR” from pop-up menu.



The screenshot shows the "Edit DVR" dialog box. It has a title bar "Edit DVR" with a close button. The dialog contains the following fields and options:

- DVR Name: 211.53.133.92
- User ID: admin
- Password: *****
- Static IP section:
 - IP Address: 211 . 53 . 133 . 92
- Port Assignment section:
 - Normal
 - Firewall
 - Advanced
- Buttons: OK, Cancel

<Note>

- DVR Name may be edited after selecting DVR icon.

4.3. DVR status



: Connected normally (Orange color)



: Fail to connect (Gray color and X mark)



: Fail to login (Gray color)




4.4. Viewing image



In order to view images, select a channel from DVR list.

If it is connected normally, image will appear. If not, error message will be indicated.

If it takes more time to receive images after connecting, “Loading...” message will show. If connection fails due to lack of network bandwidth, it will retry to connect.

 CH1 (Gray) means “before connecting”,  CH1 (Blue) means “normal connection”, and  CH1 (Red) means “fail to connect”.

4.5. Quick Recording

Place mouse cursor on live image, and right click the mouse. Click “Rec Start” for instant recording.

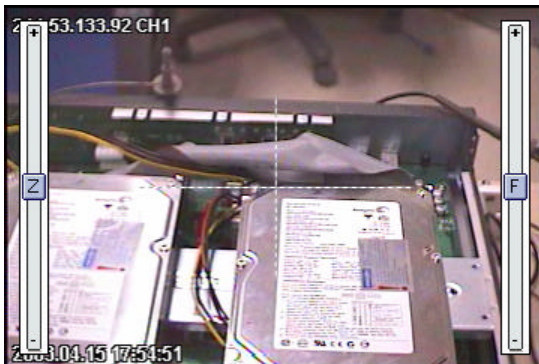


“REC 00:03” will appear on the upper right of the image. In order to stop recording, click “REC Stop.” If user doesn’t manually stop recording, it will automatically stop after ten minutes.

<Note>

- User can designate a recording drive. (Refer to “Option Configuration”)
- QuickRecording folder is created at the recording drive, and data is stored
- The recorded file name will be named using the following format “YYYYMMDD_HH_MM_SS.re3”, and the file name will refer to the time of recording initialization.
- The recorded file can be replayed with DVR Manager Playback program.

4.6. PTZ

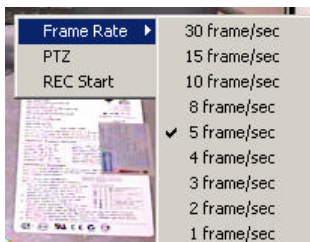


Select an image to control PTZ, and click “PTZ” among pop-up menu after right clicking the mouse.

<Note>

- In order to control PTZ, PTZ camera should be connected to the related DVR and its menu before set up.

4.7. Changing frame rate



Select an image, right click, and click “Frame Rate”

<Note>

- Default value of DVR Manager Monitor program is 5 ips(5frame/sec).


5. Group mode

Click on the “DVR” button on the upper right of the screen and select “Group” from the drop down menu.

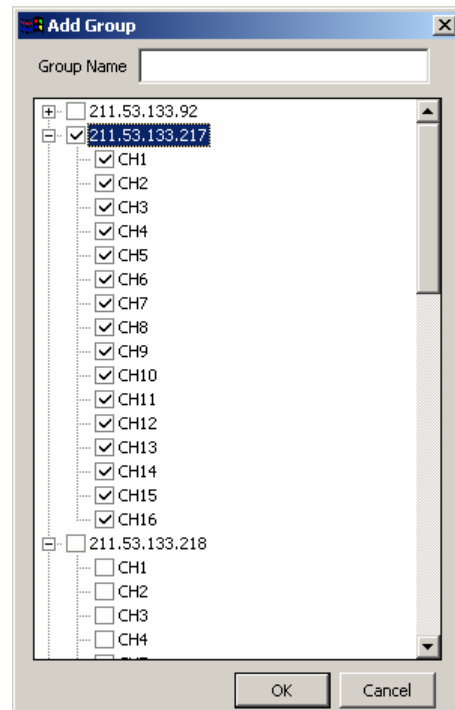


5.1. Registering group



1) Click  or move mouse to group list and right click mouse and select “Add”.

2) Enter Group Name, and select channel(s) to register.




<Note>

- Group number is not limited, but a maximum of sixteen groups is recommended.
- All group names should be different.
- Each group is limited to sixteen channels.

5.2. Editing group information

- 1) Edit group information by selecting group. Click  or select "Edit" by right clicking mouse.
- 2) Edit group name, then click "OK".

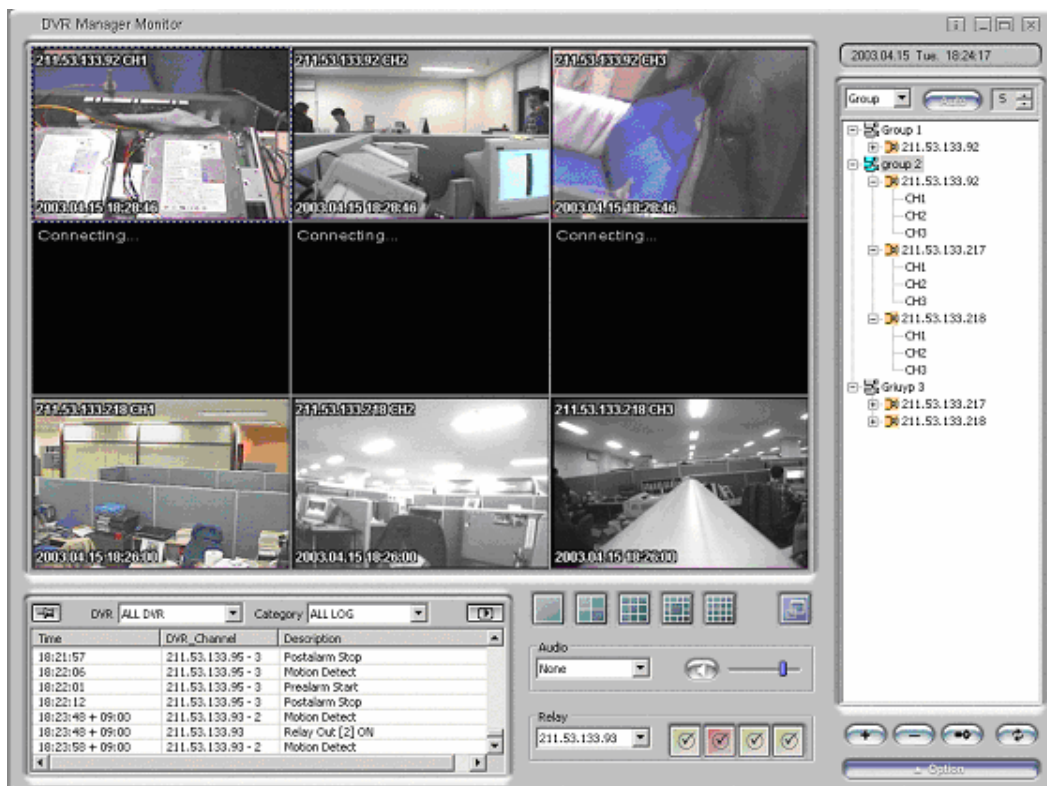
5.3. Deleting group

- 1) Select a group click  or select "Delete" by right clicking mouse.
- 2) Press "OK" button to confirm.

<Note>

- If an image within the group is viewed currently, the group can't be deleted.

5.4. Viewing images


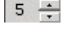



Click the group icon to monitor images.

<Note>

- Screens are automatically split according to number of channels within the group.

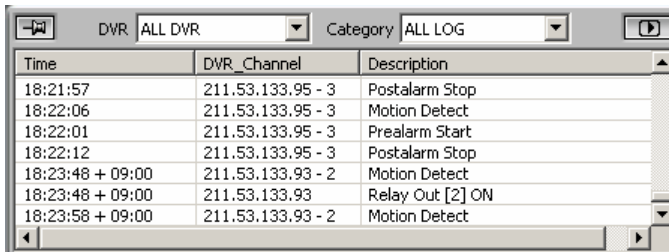
6. Auto sequence

- 1) Click DVR list or .
- 2) Set sequential duration by pressing .
- 3) In order to stop sequence mode, press  again.

<Note>

- In DVR mode, images can be viewed within a split screen. 1, 4, 9, 12, or 16 channels can be viewed simultaneously.
- In group mode, the split screen will be set according to number of channels within that group.
- In auto sequence mode, the time duration can be set between 5 and 60 seconds. Default value is 5 seconds. Time duration cannot be altered while images are being viewed.

7. Log



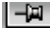
Time	DVR_Channel	Description
18:21:57	211.53.133.95 - 3	Postalarm Stop
18:22:06	211.53.133.95 - 3	Motion Detect
18:22:01	211.53.133.95 - 3	Prealarm Start
18:22:12	211.53.133.95 - 3	Postalarm Stop
18:23:48 + 09:00	211.53.133.93 - 2	Motion Detect
18:23:48 + 09:00	211.53.133.93	Relay Out [2] ON
18:23:58 + 09:00	211.53.133.93 - 2	Motion Detect

The log screen displays changes in status for each respective DVR registered on “My DVR.”.


<Note>

- A maximum of 1000 logs can be created within a 10 minute period.
- If a DVR is deleted from My DVR, the corresponding log is also deleted.

7.1. Stopping log scroll

If new log is received, it will be added at the bottom of log list and scrolled automatically. In order to stop scrolling, press . Scrolling will stop.

<Note>

-  (Red) means new scroll receiving.

7.2. Viewing log

- 1) In order to view log for a specific DVR, select DVR at DVR combo box.
- 2) In order to view the specific type of log, select the related category in the category combo box.

<Note>

- Logs can be viewed as ALL LOG, EVENT LOG, ERROR LOG, STATUS LOG, and TEXT LOG.

7.3. Viewing log image


Double click log on the log list to view images.

<Note>

- If a log is associated with a video, the corresponding video will appear when the log is selected. For example, if motion detection is detected, video showing motion detection will appear when that log is selected.

- However, if no video is associated with a log, all video from that log will appear. For example, a relay is transmitted. There will be no corresponding image for this log. In this case, images from all channels will appear if this log is selected.

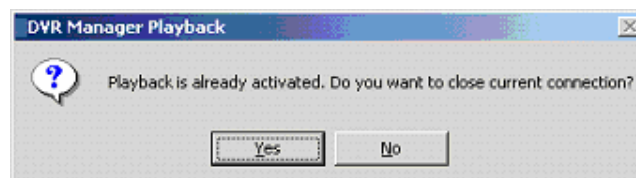
7.4. Viewing the recorded log image

Select a log from log list and press .

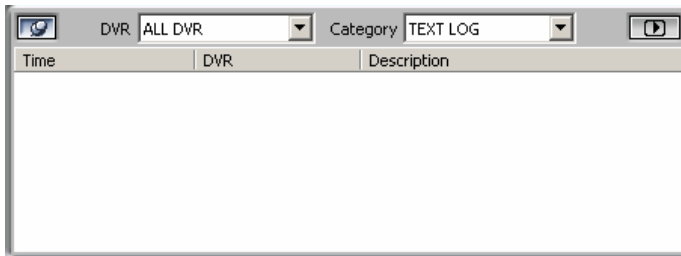
The DVR Manager Playback program runs and images are viewed.

<Note>

- If DVR Manager Playback is currently running, the following message will appear.



7.5. Text log




Text log contains text entered within DVR.

<Note>

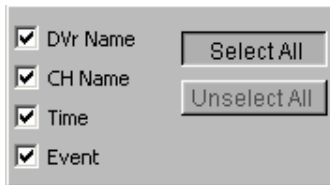
- Up to 3 lines of text are displayed per log.

8. Option configuration

Press .

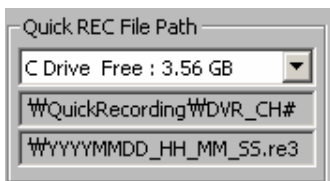
By pressing  again, option configuration page will be closed.

8.1. Caption



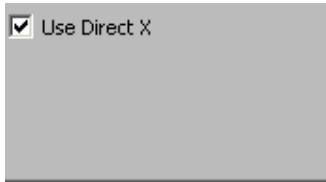
Information will appear on the image.

8.2. REC



The drive directory for quick recording can be selected.

8.3. Direct X






Set whether DirectX is to be used for viewing images.

<Note>

- For this function, DirectX drive should be installed on PC.
- This function enables to advance performance by 30%.
- If screen flickers when using DirectX, disable use of this function.

9. AUDIO




The icon  will be blue and change into  (Red) when it receives audio. Re-click on the icon when red and it will change into . Audio reception will stop.

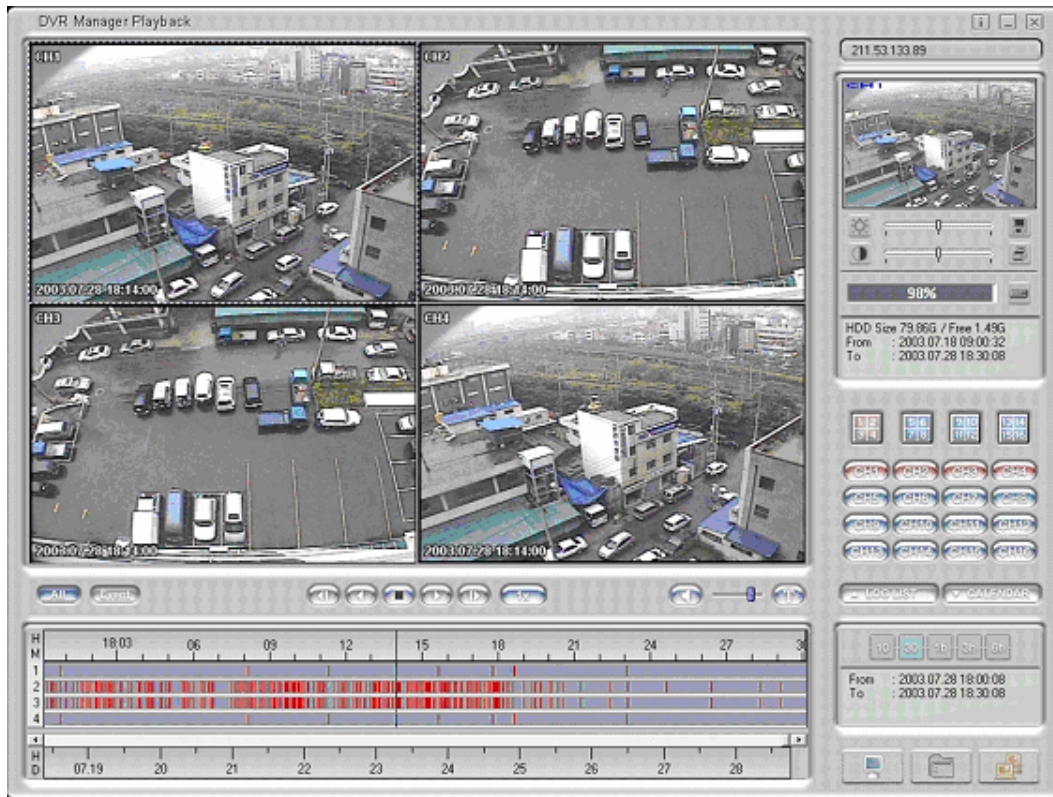
Use  to control volume.

10. Relay Out




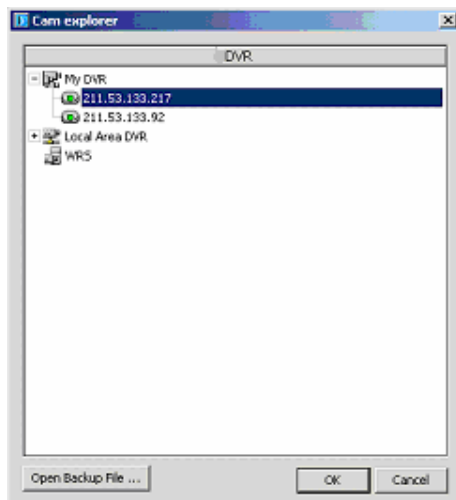
Relay Out can be turned on or off by clicking on .

DVR Manager Playback



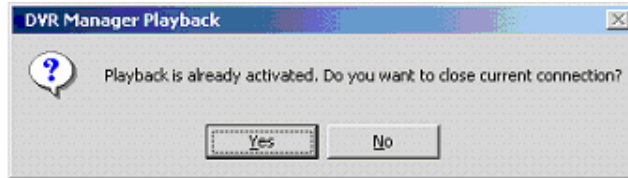
11. Selecting and connecting DVR & Backup File

- 1) Click  on the lower right hand side of the screen. DVR Explorer screen will appear.
- 2) To select recorded backup files, click on "Open Backup File" button



<Note>

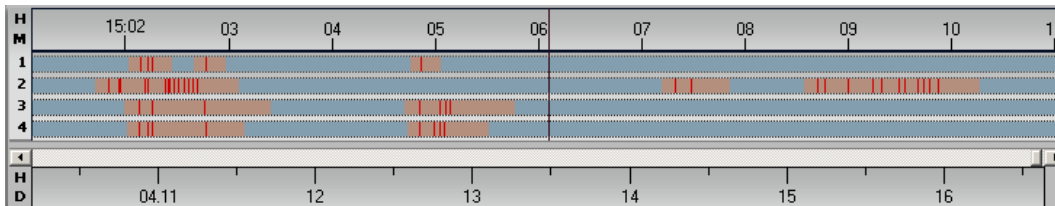
- When User ID and Password are stored, login into playback is accomplished automatically. If automatic login process has failed or User ID and password is not stored, a screen requiring User ID and password will open.
- If password for backup file is required, a window requiring password will appear.
- By double clicking backup file, DVR Manager Playback program will run automatically. However if it is already open, the following window will appear.



- If backup file is currently accessed, user only has to press the “Connect” button in order to regain access.

12. Search

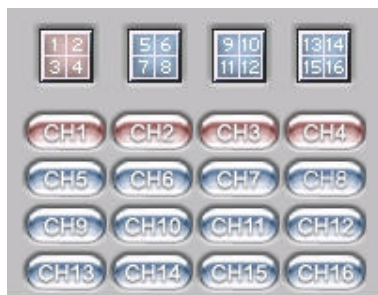
12.1. Image Information



The bottom of the playback screen provides information on the playback video. The depth of color indicates recording speed. The contrast in color indicates recording speed of video. Darker colors indicate faster recording speed. Red indicates Event (Motion detection, Sensor, etc) recording. Magenta indicates Pre/Post alarm.

12.2. Selecting channel

Select a channel with pressing the  buttons.



<Note>

- A maximum of four channels can be selected for simultaneous playback.


12.3. Changing search period

Use .

<Note>

- Click on icon to change search period from 10 minutes, 30 minutes, 1 hour, 3 hours, or 6 hours.

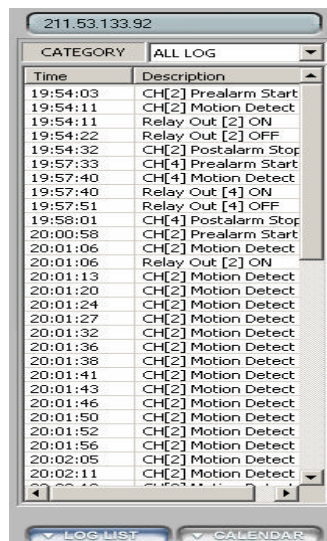
12.4. Searching calendar

Click on , and icon will appear. Select date and time to quickly view video. Click “GO” and images from that time and date will appear.



12.5. Searching log

Press .

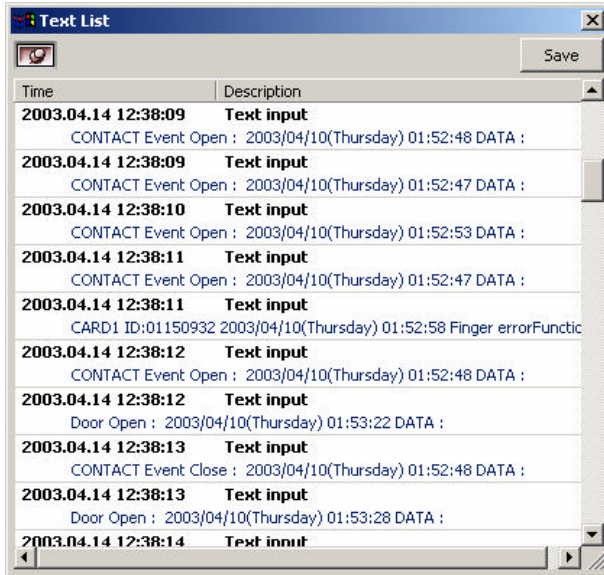


<Note>

- Log list shows the related channel's log, and user can search by category.
- Double click on a log, the log moves to the related time and corresponding video.


12.6. Searching TEXT

Press .

**<Note>**

- Double click on a log, and text moves to the related time and corresponding video.
- Press the save button; text and video will be saved to the user's designated drive.

12.7. Expanding/reducing screen

Double click on an image for expanded view or, click on corresponding icon  for expanded view.

13. Play


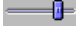

13.1. Play control button

All / Event	Toggled. Playback of all images. Event indicates playback for only event images
Backward Step	Backwards replay of images frame by frame
Backward Play	Backwards replay
Stop	Stop movement of replay
Play	Play forward
Forward Step	Replay frame by frame
Speed (1x)	Click on "1X" Designate playback speed (0.5x, 1x, 2x, 4x, ALL) 0.5 replays at half the speed, 1x is normal speed, 4x is for four times the playback speed, "ALL" plays back every image one by one regardless of time duration. For example, a four minute video will be played back in 4 minutes if 1X is selected. The same four minute video can be played in 1 minute if 4X is selected. "All" means every single image will be played back one by one. Time duration for playback would depend on number of frames and bandwidth.

<Note>

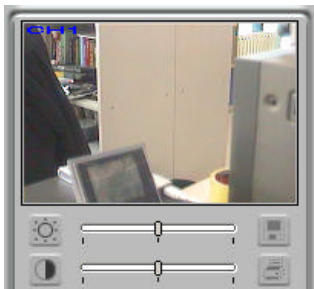
- Playback speed may be affected by network bandwidth.

13.2. Playing Audio

Audio can be played back only at "1X" speed and "All" mode. If audio is received,  button will flicker. Use  for controlling volume. Click audio button and  appears, audio status will be mute.

14. Controlling Image

14.1. Controlling zoom/brightness/contrast



Select an image, and the image will appear in the upper right portion of the playback screen.




Click on the image on the upper right of the playback screen and drag the mouse. Digital zoom of the image will appear on the screen.

To control image expansion, you may utilize +(expansion) and -(reduction) button of keyboard. If dragging zoomed area below 20 pixels or clicking another position except the area, expansion function is cancelled.




Default value is 1000 / 0.

14.2. Saving image

 is for saving a single, selected image as a 'bitmap' file.


14.3. Printing image

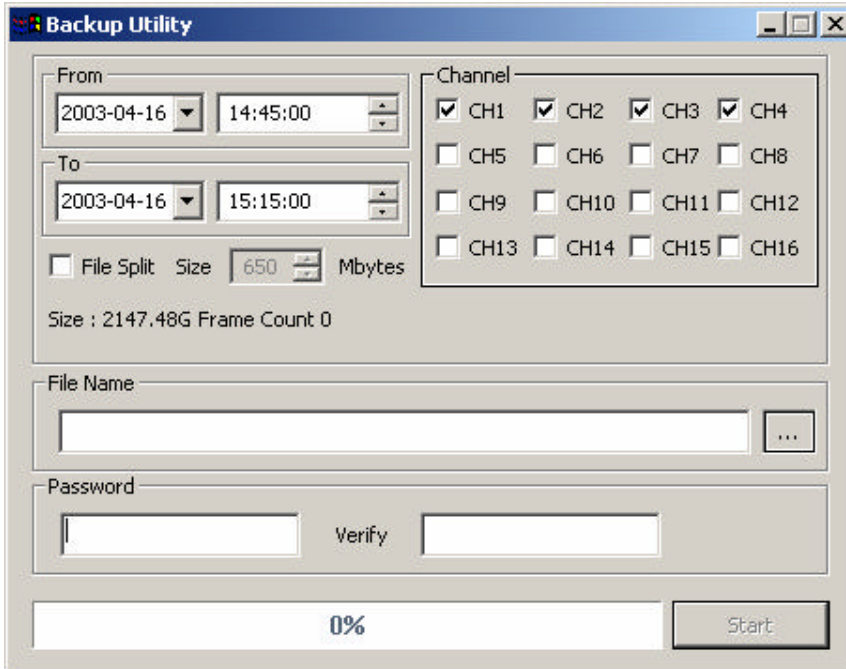
 is for printing the selected image; a memo can be attached to the image.

<Note>

- Default printing is for A4 size paper.
- Memo can be for a maximum of 5 lines, and each line is limited to 45 characters.
- All text two seconds before and after the corresponding image will appear on the print out with the image.

15. Backup function

 is for back up of data from the DVR to another drive.



Backup Utility

From: 2003-04-16 14:45:00

To: 2003-04-16 15:15:00

File Split Size: 650 Mbytes

Size : 2147.48G Frame Count 0

Channel:

- CH1 CH2 CH3 CH4
- CH5 CH6 CH7 CH8
- CH9 CH10 CH11 CH12
- CH13 CH14 CH15 CH16

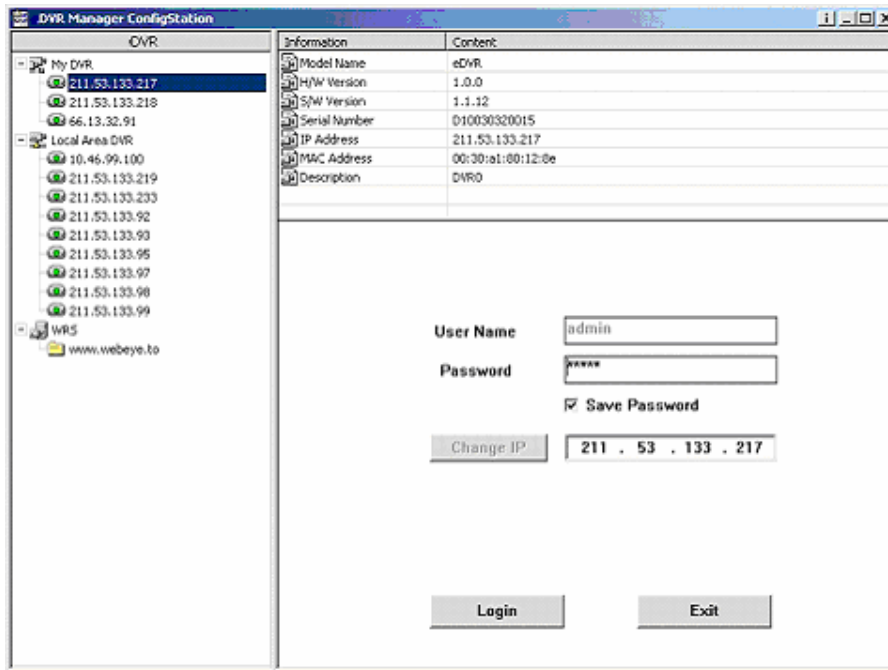
File Name: [] [...]

Password: [] Verify []

0% [Start]

Enter backup period (date & time), channel, file split, file name and password. Press “Start” button. File split is to divide up data for easy storage of data. For example if the user wants to burn the images onto a CD, the file can be split to fit onto two or more CDs.

DVR Manager ConfigStation



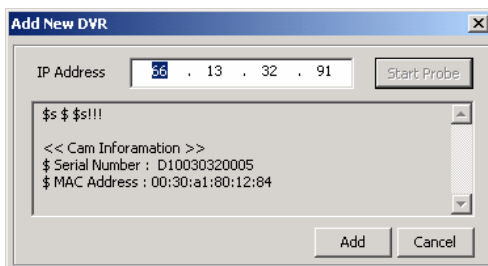
16. Registering at My DVR

My DVR folder is for registering user's DVR, changing name, and saving ID & password. It is also possible to make sub-folders for organizing DVRs.

The information on My DVR will appear on the DVR Manager Monitor, Playback, and ConfigStation screens.

16.1. Registering remote DVR

- 1) Move mouse point to "My DVR" and right click mouse. Select "Add DVR"
- 2) Enter DVR's IP address, and press the "Start Probe" button.



- 3) Press the "Add" button to confirm registration.

16.2. Registering from local area DVR list

Drag & drop local DVR into “My DVR” folder.

16.3. Registering from WRS

- 1) Click “Add WRS” among pop-up menus of WRS folder after pressing the right button of mouse, and enter Registration Server
- 2) Click “Add Group ID” among pop-up menu, and enter Group ID. Group ID is needed for reference.
- 3) Drag & drop the Group ID into “My DVR”. A window will appear “Add New DVR”.

17. Login & configure

Select a DVR in My DVR or Local Area DVR folder.

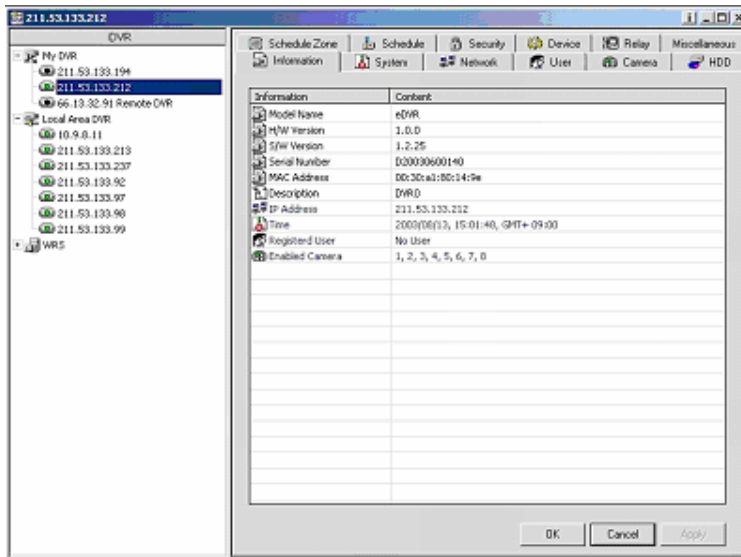
Click the “Login” button after entering password.

<Note>

- Monitor and Playback programs can be accessed with general user's ID, but ConfigStation program requires admin ID.
- The default password of admin ID is 'admin'.
- If a DVR's configuration menu is activated or remote setup is configured as “Disable”, login is impossible.
- In ConfigStation program, DVR under Local Area DVR can be accessed, but password can't be saved.
- To confirm changing a value on each tab, press the “Apply” button.

17.1. Information tab

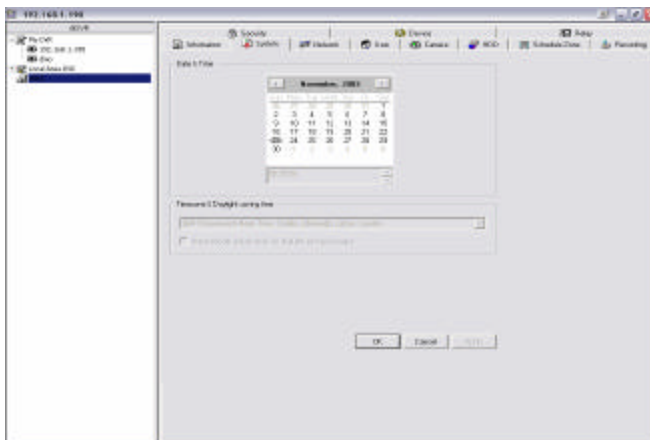
Information tab shows DVR's basic information.



<Note>

- By double clicking the blue item, the related tab will appear.

17.2. System tab

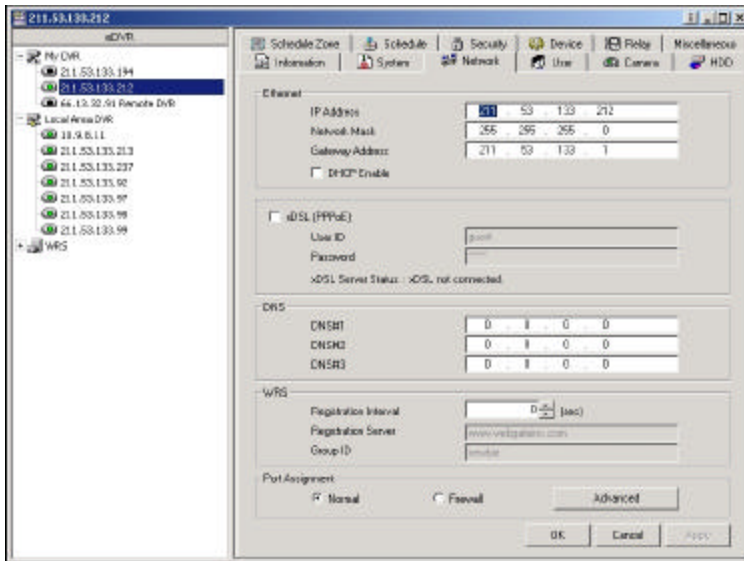


<Note>

- DVR's DATE/TIME can't be changed at remote site.
 - For setting "Date/Time" and "Network(NTP setting)", please refer to the related ELX User's Guide.

17.3. Network tab

To set DVR’s network information; Ethernet IP address, xDSL, WRS registration, and port settings.

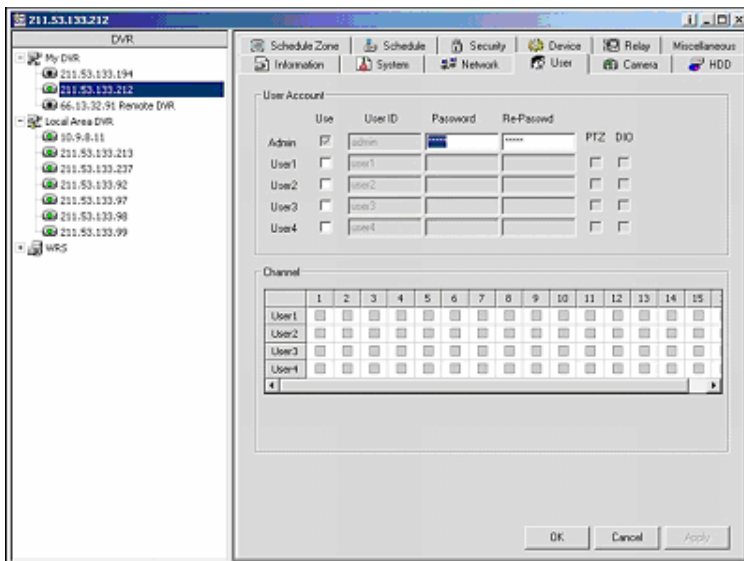


<Note>
 - For detailed information, please refer to “Network” setting menu of the related ELX User’s Guide.

17.4. User tab

User tab is for managing user name, password, and access rights to the DVR. Administrator’s user name is “admin” and can’t be altered.

General user’s access rights can be divided into three parts; PTZ control, DO(Digital Out) control, and monitoring channel control.

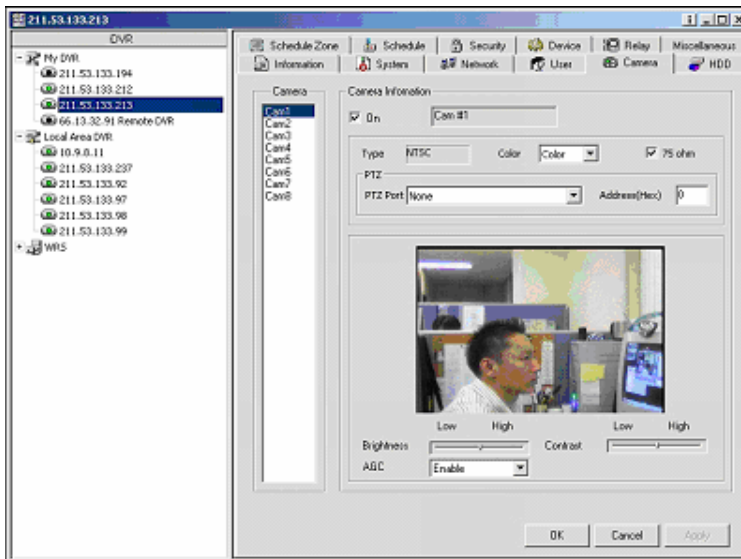


<Note>

There are six different sets of user names and passwords. Administrator has full access rights to Monitoring, Playback, and ConfigStation screens. Five different sets of user's names and passwords can be set with different access rights.

17.5. Camera tab

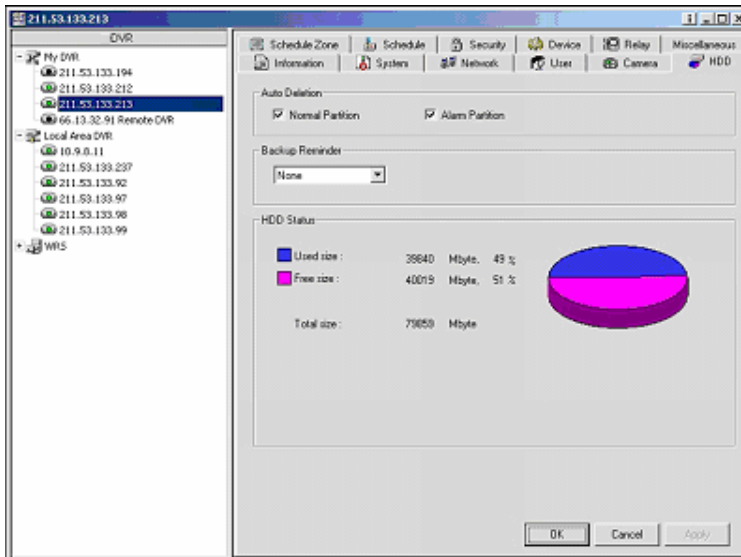
To set DVR's channel status: PTZ port, video gain, brightness, and contrast.

**<Note>**

- For detailed information, please refer to "Camera" section of the related ELX User's Guide.

17.6. HDD tab

Indicates status of recording HDD. Auto deletion and backup reminder can also be set.

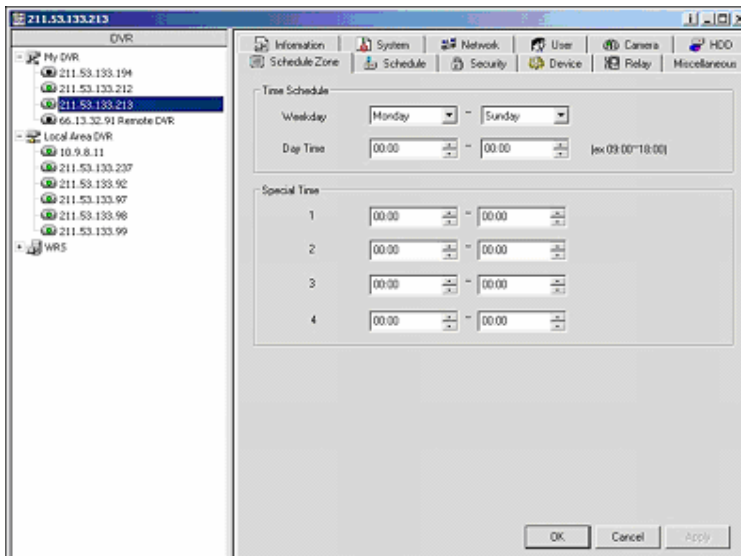


<Note>

- Please refer to “Disk Setup” part of the related ELX User’s Guide for detailed info.

17.7. Schedule Zone tab

To set WeekDay/WeekEnd, Day/Night and special time zones.

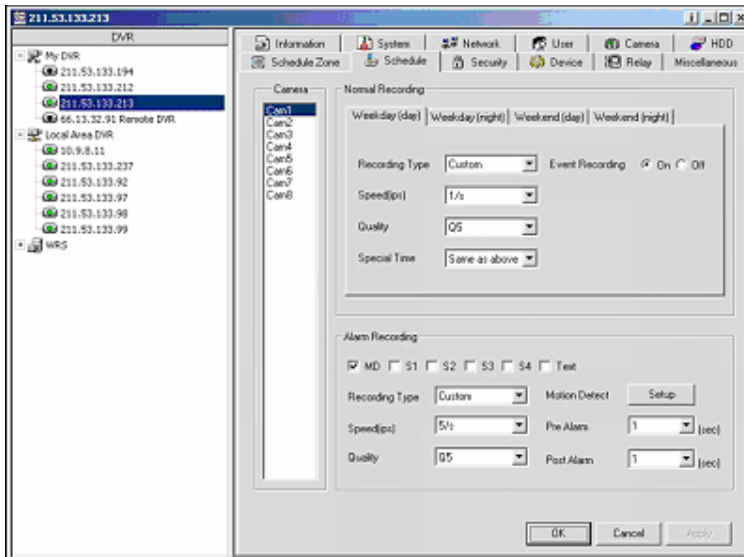


<Note>

- For detailed information, please refer to “Time Schedule” and “Special Time” sections of the related ELX User’s Guide.

17.8. Schedule tab

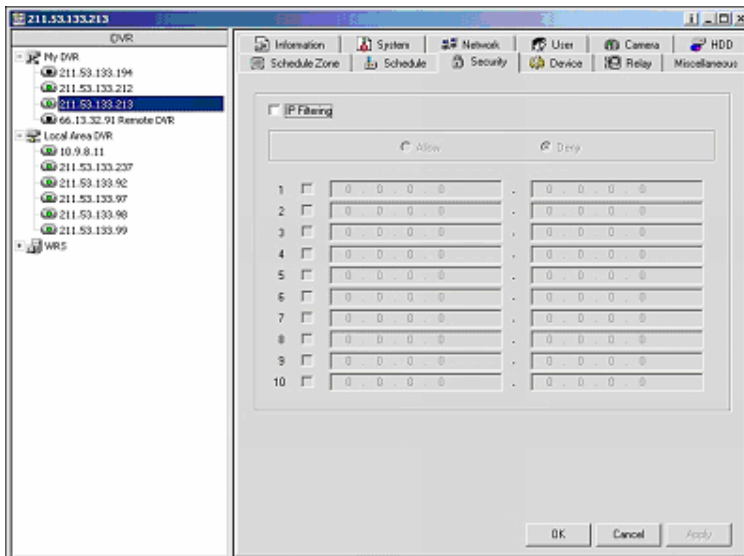
To set Normal Recording and Event Recording according to set values from Schedule Zone tab.



<Note>
 - For detailed info, refer to “Normal Rec” and “Alarm Rec” sections of the related ELX User’s Guide.

17.9. Security tab

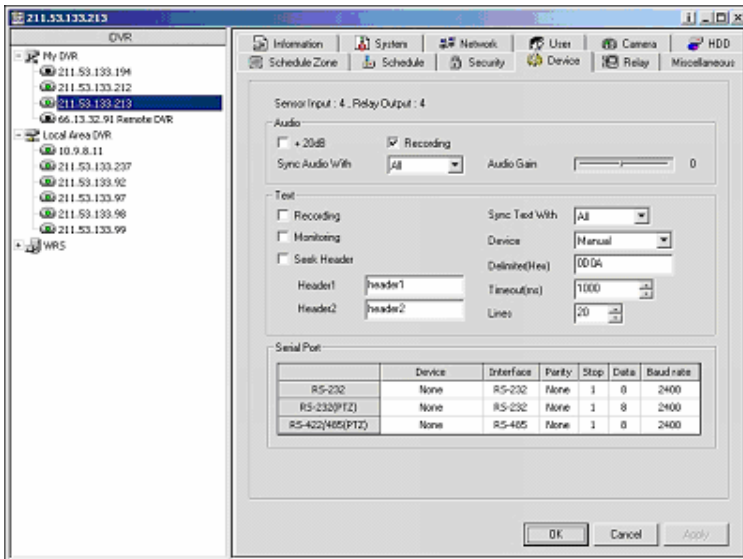
To set IP addresses available for accessing from a remote site. Select “Deny” or “Allow” and select the IP range.



<Note>
 - Security settings on the ConfigStation program is different for the On Screen Display menu.

17.10. Device tab

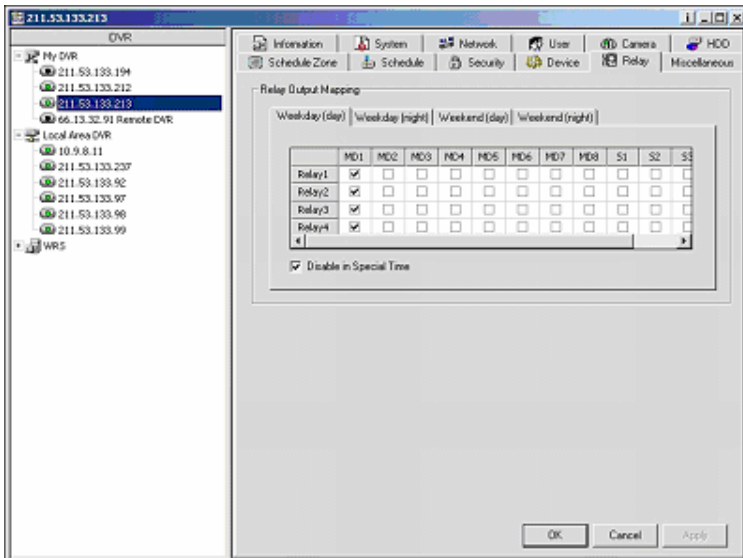
It is to set audio recording, text recording, and PTZ.



<Note>
 - For detailed information, please refer to “Audio”, “Text”, and “Serial Setup” sections of the related ELX User’s Guide.

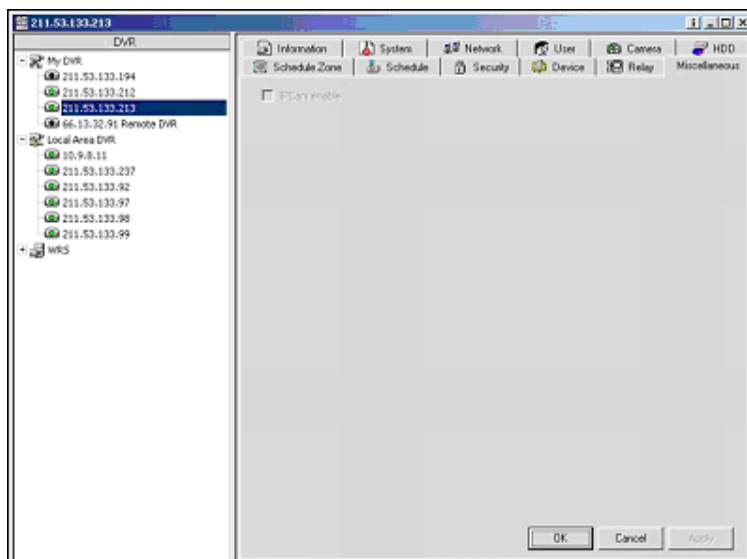
17.11. Relay tab

To set the schedule for Relay Out.



<Note>
 - For detailed information, please refer to “Relay Schedule” section of the related ELX User’s Guide.

17.12. Miscellaneous tab





Rugged CCTV

5327 Cedar Creek Dr.

Kemp, Texas 75143

Tel : (866) 301-2288

Fax : (903) 498-8989

Technical Support: 1-866-301-CCTV

URL: www.rugged-cctv.com

E-mail: sales@rugged-cctv.com